

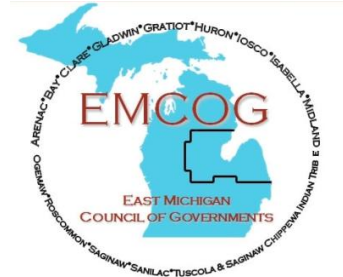
East Michigan Council of Governments

3144 Davenport Avenue, Suite 200, Saginaw, MI. 48602

Phone: 989-797-0800

Email: jfitzpatrick@emcog.org

www.emcog.org



TO: EMCOG Council and RED Team

FROM: Jane Fitzpatrick, Economic and Community Development Programs Manager

DATE: For May 7, 2021 Meetings

RE: Integrated Economic and Community Development Activities

1. EMCOG HIRES NEW TRANSPORTATION PLANNER

As you all know by now, David Engelhardt retired at the end of February. EMCOG is pleased to have hired Cody Brodie as our new Transportation Planner. Cody will be a very recent graduate of SVSU, graduating on Friday, May 7th. He has been busy becoming familiar with the Rural Task Force responsibilities as well as participating in the MIC sponsored Asset Management Champions Certification program. Cody's email is codyb@emcog.org

2. DEPARTMENT OF COMMERCE EDA INVESTMENT PRIORITIES AND RESOURCES

Current Investment Priorities of EDA

- Recovery & Resiliency
- Equity
- Technology-Based Economic Development
- Environmentally-Sustainable Development
- Workforce Development (funding for facilities and equipment; not training)
- Manufacturing – domestic suppliers is key right now
- Exports & Foreign Direct Investment

The Department of Commerce EDA website includes several resources such as:

Economic Development Directory with links to EDA regional office contacts, state government contacts, and EDD (such as EMCOG), TAAC, RLF, University Centers and Tribal planning organizations; **Grantee Information** (general information for grantees); **Indirect Costs** (overview, definitions, instructions); **Research Reports** (best practices and reports and projects funded by EDA); and **Tools for Economic Development**. Information regarding these EDA resources can be found at www.eda.gov/resources

3. BROADBAND FUNDING PROGRAMS AND RESOURCES

I've received quite a few inquiries regarding funding and programs for broadband. I've scheduled representatives from Connect Nation Michigan to give a brief presentation at the May 7th RED Team meeting. This will be followed by a separate and more detailed regional meeting with Connect Nation Michigan within the next few weeks to find out the latest information on programs and funding. In the meantime for inquiries please contact our representatives at Connected Nation Michigan:

Dan Manning dmanning@connectmi.org

Tom Stephenson tstephenson@connectmi.org

Or visit the website at <https://connectednation.org/michigan/>

4. ASSET MANAGEMENT (AM) CHAMPION PROGRAM

Both Cody Brodie and I are participating in the Michigan Infrastructure Council (MIC) Asset Management Champion Program. There are approximately 100 participants going through the training sessions. The purpose is to “establish a network of individuals and organizations to help strengthen and “champion: best practice asset management across Michigan’s complex infrastructure environment.” Participants come from local, regional or state governments, public-sector asset owners and leaders from an industry organization. The program includes learning modules and testing, resulting in certification upon completion. The kick-off session was on April 15th. Note – I sent out a notice regarding this opportunity a while ago and am pleased that some from our regional are participating in this program. More information can be found at <https://www.michigan.gov/mic/0,9260,7-380-92950---,00.html>

Also, for your entertainment and perhaps some education, here is a John Oliver video on “Infrastructure” that expresses in his style, the challenges we all are facing:

<https://www.youtube.com/watch?v=Wpzvaqypav8>

5. INTEGRATED ASSET MANAGEMENT – ASSET MANAGEMENT READINESS ASSESSMENT SCALE TOOL

The Asset Management Readiness Assessment Scale tool was officially released on February 20, 2020 by the Michigan Infrastructure Council (MIC).

Infrastructure owners such as local communities, water authorities, road commissions, public or private utilities and communications companies can receive help to understand, measure and advance their asset management proficiencies through this tool using metrics that are consistent throughout the State.

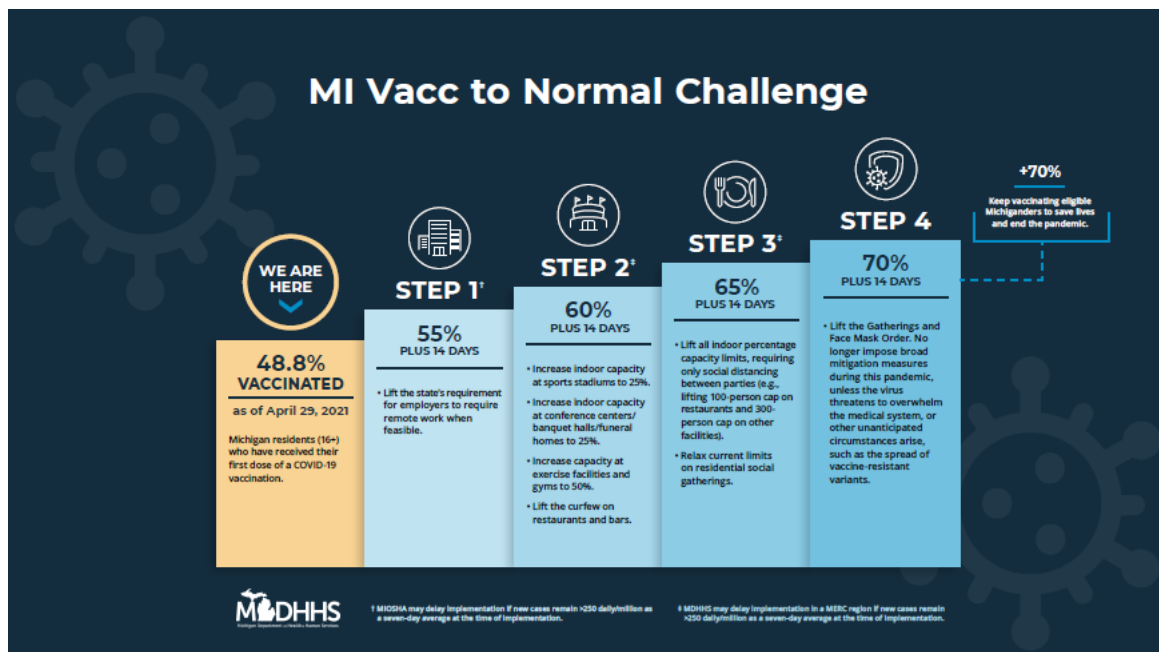
To learn more about the MIC and to download the Asset Management Readiness Scale go to www.michigan.gov/mic. There are also instructional videos at this same website. EMCOG is available to provide guidance to infrastructure owners to complete the Scale and confidentially submit scores. Any data voluntarily provided to EMCOG and/or MIC will be de-identified and be used only in aggregate format to help develop statewide infrastructure asset management policy. You may also contact me directly at jfitzpatrick@emcog.org

6. EMCOG NEW 5-YEAR CEDS APPROVED JANUARY 15, 2021

How to View the CEDS - You can view or download the new 2021-2025 CEDS document at www.emcog.org. See the Economic & Community Development section of the website for details and to view or download a copy of the 2021-2025 CEDS. For information on the CEDS or other economic and community development initiatives please contact Jane Fitzpatrick at jfitzpatrick@emcog.org

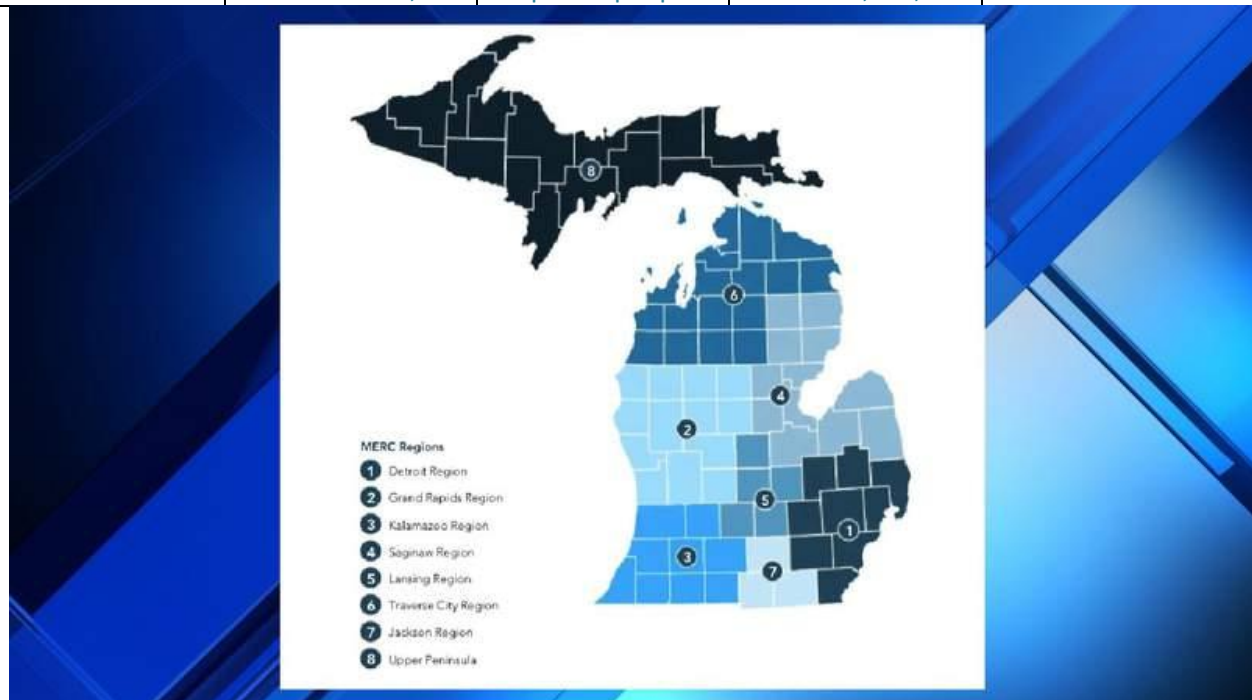
7. EMCOG COVID STATUS AND MI VACC TO NORMAL CHALLENGE

On April 29th Governor Whitmer unveiled the plan to Get “MI Vacc to Normal which is based on the following four steps for vaccination-based milestones:



Here is a summary of data of confirmed cases and vaccination rates for the counties within the EMCOG Region as of May 1st (COVID cases) and May 2nd (Vaccinations). Step 1 of the *MI Vacc to Normal Challenge* is to reach 55% plus 14 days in order to lift the State's requirement for employers to require remote work when feasible. The State will be basing achievement of metrics within regions as shown in the map below this table. These regions do not align with the EMCOG Region. I will provide an update during the May 7th Council & RED Team meetings.

	Confirmed COVID Cases as of May 1, 2021	COVID Cases per Capita (all ages)	Residents Vaccinated as of May 2, 2021	Percent of Population Age 16+ Vaccinated
ARENAC	977	1 per 15 people	6,013	48.0%
BAY	9,954	1 per 10 people	44,918	52.8%
CLARE	1,909	1 per 16 people	10,727	42.1%
GLADWIN	1,821	1 per 14 people	9,736	45.8%
GRATIOT	3,007	1 per 13 people	13,972	41.3%
HURON	2,957	1 per 10 people	13,197	51.3%
IOSCO	1,674	1 per 15 people	10,858	50.7%
ISABELLA	5,038	1 per 14 people	23,723	40.1%
MIDLAND	6,384	1 per 13 people	37,628	55.6%
OGEMAW	1,312	1 per 16 people	7,119	40.5%
ROSCOMMON	1,544	1 per 15 people	10,228	48.9%
SAGINAW	18,655	1 per 10 people	75,172	48.6%
SANILAC	3,612	1 per 11 people	13,199	39.4%
TUSCOLA	4,686	1 per 11 people	18,273	42.4%
EMCOG TOTAL	63,530	1 per 12 people	294,763	47.4%
MICHIGAN	844,385	1 per 12 people	4,044,710	50.0%



8. ALICE 2021 REPORT

The 2021 Michigan Report “ALICE In Michigan: A Financial Hardship Study” was released in March. It is the fourth report produced by the Michigan Association of United Ways. The first report was released in 2015, with updates released in 2017, 2019 and now 2021. The following quote from the introduction of the latest study summarizes the findings and trends in quantifying how Michigan households are doing.

“Over the last decade, behind the veneer of a strong economy conditions have actually worsened for thousands of families across Michigan – setting the stage for the dual health and economic crises of the COVID-19 pandemic. From 2010 to 2019, Michigan showed steady economic improvements according to traditional measures. Unemployment fell to historic lows, GDP grew, and wages rose slightly. Yet in 2019, nine years after the end of the Great Recession, 38% of Michigan’s 3,963,558 households still struggle. And while 13% of these households were living below the Federal Poverty Level (FPL), another 25% - nearly twice as many – were ALICE households.”¹

According to the 2021 report 1 out of every 2.25 households (40%) are earning less than what is needed (the ALICE Threshold) to afford the basics, such as housing, child care, food, transportation, health care and technology in the 14 county EMCOG Region. The numbers vary by county from a low in Midland County of 28% to a high in Clare County of 53%. Statewide, the number of households as reported in the 2021 study, amounts to 38% with income below the ALICE Threshold for survival.

This new ALICE report demonstrates why the pandemic is hitting so hard for so many people. Three points regarding Michigan are made in the report:

1. The cost of living has been increasing for ALICE households;
2. The economy is increasingly dominated by jobs with low wages and less security;
and
3. The number of ALICE households increased in response to the Great Recession and never fully recovered.

The data within the report, along with supporting detailed data sets provides an excellent measure of how we were doing pre-pandemic (the data is based on 2019). EMCOG is currently researching updates to the data elements in order to quantify the impact the COVID-19 pandemic has had on our households during 2020. The full analysis of ALICE in the region will be released in the next month. Individual county reports will be prepared as well. The statewide report can be found at <https://www.uwmich.org/alice>

¹ For the EMCOG Region 16% of Households were living below the FPL and another 25% were ALICE Households.

9. SOURCES FOR FEDERAL ANNOUNCEMENTS AND FUNDING OPPORTUNITIES

Announcements and opportunities from multiple sources including:

- [Grants.gov](https://www.grants.gov)
- [USDA Rural Development Innovation Center](#)
 - [Rural Innovation Matters](#)
- DOE
 - [Office of Energy Efficiency & Renewable Energy Newsletter](#)
 - Advanced Manufacturing Program
- EPA [Energy Resources for State, Local, and Tribal Governments](#)
 - [State, Local, and Tribal Energy Newsletter](#)
- [FEMA COVID-19 Supplemental Resources](#)
- [Small Business Administration \(SBA\) COVID-19 Funding Options](#): A list of thousands of funding sources at the national, state, regional, and local levels designed to support small businesses in accessing capital to recover from COVID-19.